



 **POWER SERIES**

**GUANGZHOU RELIABLE
SOLAR ENERGY TECH CO.,LTD**

Catalog

**Solar Energy Appliances Manufacturer
and Supplier in China**

We always provide **Reliable Solar Energy** products

Company Introduction

As a 17 years experience electronics,manufacturer, we started solar energy appliances design and production since 2010.Now we invest the production key parts supply chain,such as automatic solar module production line,PCB plant,Mould plant,Battery plant, etc.

OUR VISION

By continuous improvement in the quality of our products & service, enabling our customers to enjoy a trustworthy cooperation with “EASY POWER” & “Xpower” series solar energy items

OUR MISSION

Keeping the passion provide good quality and cost-effective solution to every customer whether they come from emerging market or developed markets,based on good faith and innovation.



WHY Reliable Solar ?



OEM & ODM Are Accepted

Customized LOGO, develop on artwork&development, any variable design, are according to customer's requests.



Step-By-Step Technical Support

Manual is along with products , also our engineer will give professional suggestions based on the scene. Even videos could be provided.



Guaranty Stable Quality

Controlling the defective products within 0.5%. From material to delivery, QC inspect strictly.



Warranted The Best Price

We train our staffs every month, make purchase and logistics plan, improve products structure and performance to reduce cost on the premise of stable quality.



Professional Service

With patient and professional to provide prompt response for every customers. Design- Molding-PCB-SMT-Testing-Assembly -Testing-Delivery-Follow-up Service, all are provided.



Distributorship Is Offered

Warmly welcome you become our distributors. Timely industry new&new products information will be sent in time. Protection of your sales area, ideas of design and all your private information.

What Our Clients Say



Saud Al Kh.



Good company, we worked together more than 4 years. Now we consider further cooperations for solar panels.



Shadrack



Their products quality is good. They are trustworthy. Just hope they can develop more new items for African market.



Rami J. A.



That was 2013 when we start our first order. The after sell service is good, they gave me good suport for all orders. But they should give me better price for old customers.

High Quality Solar Panel Ignite the Power of Sun



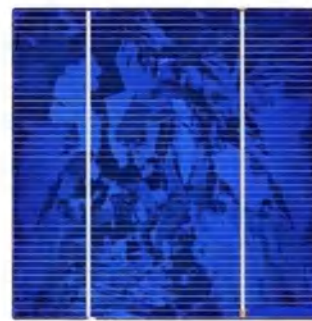
MONO CRYSTALLINE SERIES



Mechanical Specification

Product: Mono-crystalline silicon solar cell
 Thickness: $200\mu\text{m} \pm 30\mu\text{m}$, $180\mu\text{m} \pm 30\mu\text{m}$
 Front: $1.5 \pm 0.1\text{mm}$ busbar(silver)
 Silicon nitride antireflection coating
 Back: 3.0mm continuous soldering pads(silver) Back surface field (aluminum)

POLY CRYSTALLINE SERIES



Mechanical Specification

Product: Poly-crystalline silicon solar cell
 Thickness: $180\mu\text{m} \pm 20\mu\text{m}$
 Front: 1.4mm busbar(silver), blue anti anti-reflection coating (Silicon nitride)
 Back: 2.8mm wide soldering pads (silver) Back surface field (aluminum)

We Always Provide Reliable Solar Energy Products

MONO SOLAR PANEL



PID Free Module

Anti-PID cell and encapsulation technology
Frameless module requires no module grounding which may PID



Higher Lifetime Power Yield:

<0.5% annual power degradation
25 year linear power warranty



Saving BOS Cost:

Designed for high voltage systems of up to 1500 VDC,
saving BOS cost



Improved Durability and Reliability:

Dual glass reduces micro-cracking, snail trails, corrosion caused by
moisture, sand, salt mist, acid, alkali, etc.



Less Maintenance Requirement:

Reduced soiling and snow coverage requires less maintenance and
enhances fire safety



Aesthetically Pleasing Design:

white back sheet maximizes module efficiency up to 19.5%(60-Mono
max. output 275W); Transparent back sheet increases light
transmission, ideal for installations requiring light to pass through



Strengthened Mechanical Support:

5400 Pa snow load, 2400 Pa wind load



MONO CRYSTALLINE SPECIFICATIONS

MODEL	POWER	VMP	VOC	IMP	ISC	SIZE	PCS/CTN	N.W(KG)
XP-10W-M	10W	18V	21.8V	0.57A	0.62A	360*240*17	10	1.13
XP-15W-M	15W	18V	21.8V	0.86A	0.97A	380*350*17	10	1.5
XP-20W-M	20W	18V	21.8V	1.11A	1.18A	490*350*25	10	1.9
XP-30W-M	30W	18V	21.8V	1.69A	1.85A	650*350*25	10	2.5
XP-40W-M	40W	18V	21.8V	2.29A	2.46A	425*670*25	10	3.3
XP-50W-M	50W	18V	21.8V	2.81A	3.05A	540*670*30	5	3.8
XP-60W-M	60W	18V	21.8V	3.26A	3.5A	640*670*30	5	4.6
XP-80W-M	80W	18V	21.8V	4.58A	4.93A	1100*510*30	4	5.4
XP-100W-M	100W	18V	21.8V	5.62A	6.05A	1200*540*30	2	7.2
XP-120W-M	120W	18V	21.8V	6.86A	7.43A	1030*670*30	2	8
XP-180W-M	180W	18.9V	23.5V	9.26A	9.96A	1480*680*30	2	11.7
XP-230W-M	230W	36V	45V	6.39A	6.73A	1340*992*35	2	16
XP-300W-M	300W	31.6V	39V	9.49A	10.02A	1650*992*40	2	20
XP-350W-M	350W	37V	47V	9.28A	9.73A	1980*992*40	2	23

We Always Provide Reliable Solar Energy Products

POLY SOLAR PANEL



PID Free Module

Anti-PID cell and encapsulation technology
Frameless module requires no module grounding which may PID



Higher Lifetime Power Yield:

<0.5% annual power degradation
25 year linear power warranty



Saving BOS Cost:

Designed for high voltage systems of up to 1500 VDC,
saving BOS cost



Improved Durability and Reliability:

Dual glass reduces micro-cracking, snail trails, corrosion caused by
moisture, sand, salt mist, acid, alkali, etc.



Less Maintenance Requirement:

Reduced soiling and snow coverage requires less maintenance and
enhances fire safety



Aesthetically Pleasing Design:

White back sheet maximizes module efficiency up to 19.5% (60-poly
max. output 275W); Transparent back sheet increases light
transmission, ideal for installations requiring light to pass through



Strengthened Mechanical Support:

5400 Pa snow load, 2400 Pa wind load



POLY CRYSTALLINE SPECIFICATIONS

MODEL	POWER	VMP	VOC	IMP	ISC	SIZE	PCS/CTN	N.W(KG)
XP-10W-P	10W	18V	21.8V	0.57A	0.62A	360*240*17	10	1.13
XP-15W-P	15W	18V	21.8V	0.86A	0.97A	380*350*17	10	1.5
XP-20W-P	20W	18V	21.8V	1.11A	1.18A	490*350*25	10	1.9
XP-30W-P	30W	18V	21.8V	1.69A	1.85A	650*350*25	10	2.5
XP-40W-P	40W	18V	21.8V	2.29A	2.46A	425*670*25	10	3.3
XP-50W-P	50W	18V	21.8V	2.81A	3.05A	540*670*30	5	3.8
XP-60W-P	60W	18V	21.8V	3.26A	3.5A	640*670*30	5	4.6
XP-80W-P	80W	18V	21.8V	4.58A	4.93A	1100*510*30	4	5.4
XP-100W-P	100W	18V	21.8V	5.62A	6.05A	1030*670*30	2	7.8
XP-120W-P	120W	18V	21.8V	6.86A	7.43A	1200*670*30	2	8
XP-150W-P	150W	18V	21.8V	8.43A	9.08A	1480*670*30	2	11.7
XP-220W-P	220W	36V	44V	6.1A	6.56A	1340*990*35	2	16
XP-270W-P	270W	30.9V	38.03V	8.73A	9.42A	1650*992*40	2	20
XP-330W-P	330W	37.17V	46.01V	8.87A	9.49A	1980*992*40	2	23

RESIDENTIAL INVERTER SUPPLIER



Design
Engineering



Testing
Engineering



Manufacturing
Engineering

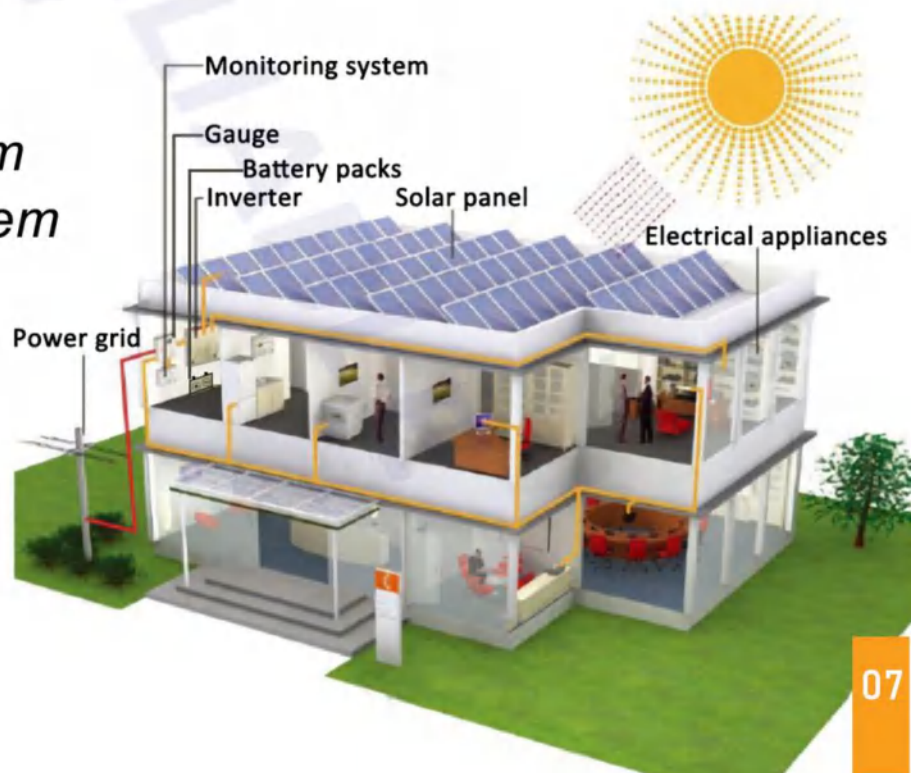


Component
Engineering



Reliability
Engineering

*Schematic diagram
of household system*

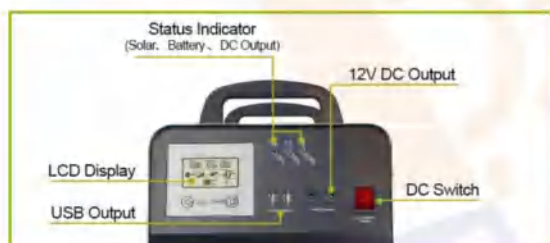




AL-Portable solar power system

- 1.AC&DC Portable solar power system
- 2.Inverter,Solar charger,AC charger, Battery all in one with small volume, simple installation
- 3.12V DC output and 5V USB solar power supplt,it is suitable for mobile charge,DC LED lights
- 4.Pure sine wave inverter power supply stable electricity to house appliances
- 5.LCD display all kinds of working status
- 6.Customized

The fuselage information



Solar system connection



PRODUCT SPECIFICATIONS

ITEM	AC POWER	DC VOLTAGE	SOLAR CHARGE CURRENT	BUILT IN BATTERY	AC OUTPUT	DC OUTPUT	CONFIGURED SOLAR PANEL	DIMENSION (mm)	N.W G.W
1	100W	12VDC	30A	55AH*1	Univ ersal AC output sockets x2pcs	12VDC*2 5VDC*2	150W*1PCS	343*225* 443	21/ 22.2
2	200W	12VDC	30A	55AH*1		12VDC*2 5VDC*2	150W*1PCS	343*225* 443	22/ 23.2
3	300W	12VDC	30A	55AH*1		12VDC*2 5VDC*2	150W*1PCS	343*225* 443	25/ 27.2
4	300W	12VDC	30A	100AH*1		12VDC*2 5VDC*2	150W*2PCS	423*260* 453	39/ 41.2
5	500W	12VDC	30A	55AH*1		12VDC*2 5VDC*2	150W*1PCS	343*225* 443	26/ 28.2
6	500W	12VDC	30A	100AH*1		12VDC*2 5VDC*2	150W*2PCS	423*260* 453	40/ 42.2
7	1000W	24VDC	30A	55AH*2		12VDC*2 5VDC*2	310W*1PCS	423*260* 453	46/ 47.6
8	1000W	24VDC	30A	55AH*4		12VDC*2 5VDC*2	310W*2PCS	513*310* 493	79/ 80.9
9	1000W	24VDC	30A	55AH*4		12VDC*2 5VDC*2	310W*2PCS	513*310* 493	83.5/ 85.4



AL-H Solar power system

- 1.MPPT hybrid solar inverter combined power inverter with MPPT solar controller,more efficient, simple installation
- 2.Pure sine wave low frequency power inverter with AC charger,low loss,with ups function,strong load capacity
- 3.Charging mode: Solar charging,The grid power charging optional
- 4.Working mode: the grid priority/energy saving mode/battery priority can be set flexibly
- 5.LCD display,diversify settings
- 6.Lead acid/Gel deep cycle solar battery built-in

PRODUCT SPECIFICATIONS

ITEM	AC POWER	DC VOLTAGE	SOLAR CHARGE CURRENT	BUILT IN BATTERY	AC OUTPUT	DC OUTPUT	CONFIGURED SOLAR PANEL	DIMENSION (mm)	N.W G.W
1	1000W	24VDC	40A	200AH*2	Universal AC output sockets x2pcs	12V DC*2 5V USB*2	310W*4PCS	555*515*540	175/180
2	1500W	48VDC	40A	200AH*4			310W*6PCS	555*515*820	330/335
3	2000W	24VDC	40A	100AH*2			310W*2PCS	380*380*520	123/127
4				120AH*2			310W*2PCS	380*380*520	135/140
5				150AH*2			310W*3PCS	380*380*520	150/155
6	2500W	24VDC	40A	100AH*2			310W*2PCS	380*380*520	125/130
7				120AH*2			310W*2PCS	380*380*520	138/143
8				150AH*2			310W*3PCS	380*380*520	153/158
9	2000W	24VDC	40A	120AH*4			310W*4PCS	555*515*820	238/243
10				150AH*4				555*515*820	269/274
11	2500W	24VDC	40A	120AH*4			310W*4PCS	555*515*820	240/246
12				150AH*4				555*515*820	271/278
13	2000W	24VDC	50A	200AH*2			310W*4PCS	555*515*540	182/188
14		48VDC		200AH*4			310W*6PCS	555*515*820	334/341
15	2500W	24VDC	50A	200AH*2			310W*4PCS	555*515*540	185/191
16		48VDC		200AH*4			310W*6PCS	555*515*820	336/343
17	3000W	24VDC	60A	200AH*2			310W*4PCS	555*515*540	188/195
18		48VDC		200AH*4			310W*6PCS	555*515*820	340/349
19	5000W	48VDC	60A	200AH*4			310W*6PCS	555*515*820	193/202
20	6000W	48VDC	60A	200AH*4			310W*6PCS	555*515*820	345/356



AL-H-L lithium solar power system

1. Combined power inverter, MPPT solar charge controller, Top Chinese Lithium Battery CATL cycle life up to 2500 times
2. Simple installation and free maintenance to users
3. Pure sine wave Inverter power supply stable electricity to house appliances
4. LCD display all kinds of working status, Smart fan control, safe and reliable
5. The pure sine wave output, can adapt to various types of load
6. The intelligent MPPT solar controller, overcharge, overdischarge protection, current limiting charging, multiple protection

Solar system connection



PRODUCT SPECIFICATIONS

ITEM	RATED POWER	DC VOLTAGE	SOLAR CHARGE CURRENT	BATTERY CAPACITY	AC OUTPUT	DC OUTPUT	MAX.SOLAR PANEL CONFIGURED	DIMENSION (mm)
1	3000W	48VDC	30A	2.2KWh	Universal sockets*2	12VDC*2 5VDC*2	1600W	515*397*530
2	3000W	48VDC	30A	4.5KWh		12VDC*2 5VDC*2	1600W	515*397*530
3	3000W	48VDC	60A	4.5KWh		12VDC*2 5VDC*2	3200W	515*397*530
4	5000W	48VDC	30A	4.5KWh		12VDC*2 5VDC*2	1600W	515*397*530
5	5000W	48VDC	60A	4.5KWh		12VDC*2 5VDC*2	3200W	515*397*530



NKM-Low frequency MPPT hybrid inverter

1. Double CPU intelligent control technology, performance excellence
2. The power mode/energy saving mode/battery mode can be set up, flexible application
3. Smart fan control, safe and reliable
4. The pure sine wave output, can adapt to various types of load
5. Wide input voltage range, high-precision output automatic voltage function
6. The LCD real-time display device parameters, running status at a glance
7. The output overload, short circuit protection, automatic protection and alarm
8. The intelligent MPPT solar controller, overcharge, overdischarge protection, current limiting charging, multiple protection

Solar system connection



Product Specifications

Model No.	1	2	3	4	5	6	7	8	9	10
Rated power	300W	500W	750W	1000W	1500W	2000W	3000W	4000W	5000W	6000W
DC voltage	12V	12V	12V	12V	12V	12V	12V	12V	12V	12V
Output(AC)	110V/ 220V	110V/ 220V	110V/ 220V	110V/ 220V	110V/ 220V	110V/ 220V	110V/ 220V	110V/ 220V	110V/ 220V	110V/ 220V
Solar charge current	30A	30A	30A	30A	50A	60A	60A	60A	60A	60A
N.W/G.W(kg)	12.2/ 15.9	14/ 17.6	14.8/ 18	15/ 18.6	23/28	29/34	32/37	35/40	37.7/ 42.7	42/47
Package dimension	420*320*122mm				520*420*222mm					



NMII-High frequency MPPT hybrid inverter

1. Pure sine wave solar inverter
2. Output power factor 1.0
3. Wifi&GPRS available for IOS and android
4. Inverter running without battery
5. Built-in 100A MPPT solar charger
6. High PV input voltage range(120~500VDC)
7. Built-in anti-dusk kit for harsh environment
8. Smart battery charge design to optimize battery life

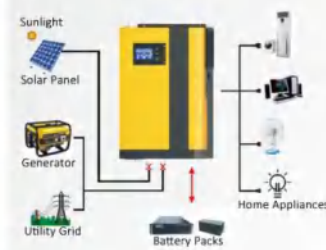
Solar system connection

■ Operation with battery connected

1 Solar Power and AC Power available

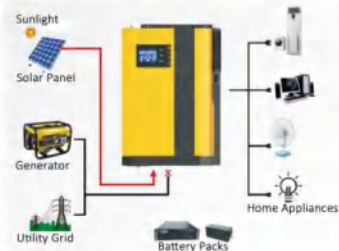


2 Solar Power and AC Power not available

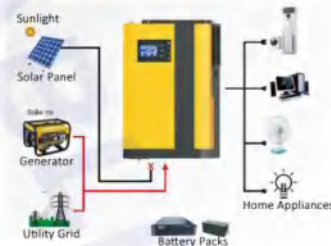


■ Operation without battery connected

3 Solar Power available



4 AC Power available



Product Specifications

Model No.	NMII-1	NMII-2
Rated power	3.5KW	5.5KW
Max.PV power	5KW	6KW
DC voltage	24V	48V
Solar charge current	100A	100A
Gross weight	11KG	12KG
Package dimension	100*300*440mm	100*300*440mm

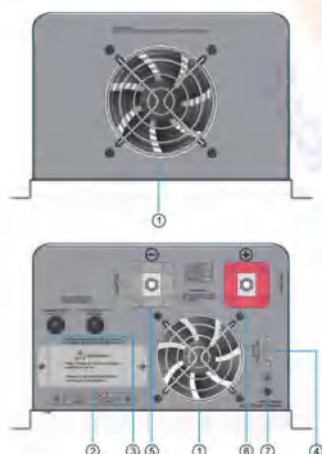




FT-Series 1KW-6KW inverter

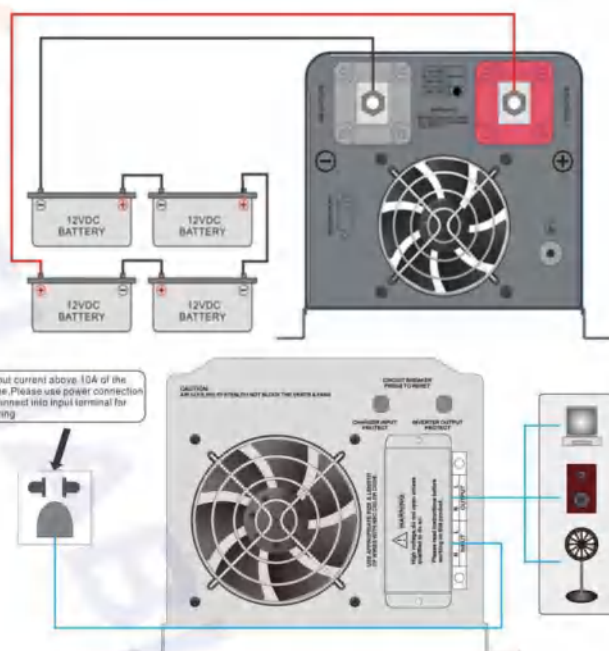
1. Double CPU intelligent control technology, excellent performance
2. The grid mode /battery mode could be set, application flexible
3. Charge current/battery type could be set, convenient and practical
4. Intelligent fan control, safe and reliable
5. Pure sine wave AC output, and be adapt to all kinds of loads
6. LCD display equipment parameter in real-time, operation status be clear at a glance
7. Output overload, short circuit protection, various of automatic protection and alarm warning

View of equipment appearance



- ①--Fan
- ②--AC input/output terminal
- ③--AC input/output fuse holder
- ④--RS232 communication interface(optional function)
- ⑤--Battery terminal negative input terminal
- ⑥--Battery terminal positive terminal
- ⑦--Earth terminal

Solar system connection



Product Specifications

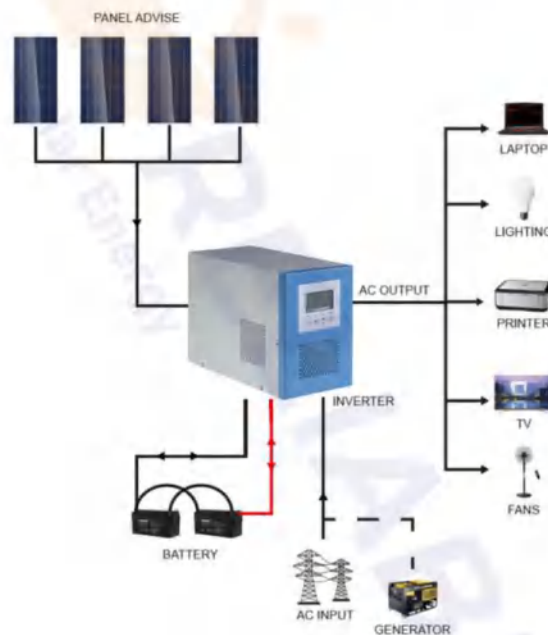
Model No.	FT-1	FT-2	FT-3	FT-4	FT-5	FT-6	FT-7
Rated power	1KW	1.5KW	2KW	3KW	4KW	5KW	6KW
DC voltage	12V/24V/48V	12V/24V/48V	12V/24V/48V	12V/24V/48V	24V/48V	24V/48V/96V	48V/96V
Output	110VAC/220VAC	110VAC/220VAC	110VAC/220VAC	110VAC/220VAC	110VAC/220VAC	110VAC/220VAC	110VAC/220VAC
Solar charge current	30A	30A	30A	30A	30A	30A	30A
N.W./G.W.(kg)	11/13	12/14	14/16	16/18	23/27	26/30	30/34
Package dimension	550*310*230mm				640*370*240mm		



FT-Series 300W-1KW inverter

1. Microcomputer (MCU) control technology, excellent performance;
2. Power frequency transformer design scheme, pure sine wave AC output, the inverter has strong adaptability to load;
3. Intelligent RS232 interface, humanized digital communication;
4. Wide range of inverter, high precision, fully automatic voltage stabilization;
5. All-round protection function (overload, short circuit, over voltage, under voltage, over temperature);
6. Concise and clear LED display combined with LCD display, the operating status of the equipment is clear at a glance;
7. Strong power grid adaptability, suitable for supporting generators;
8. The inverter has intelligent battery management, overcharge protection, and extends battery life;

Solar system connection



Product Specifications

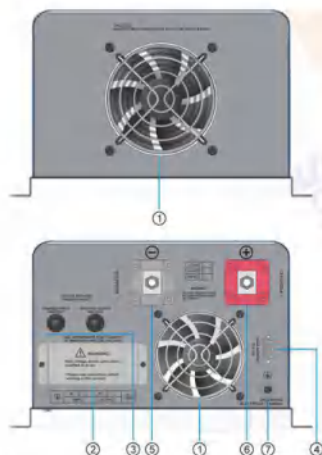
Model No.	FT-300	FT-500	FT-700	FT-750	FT-1000
Rated power	300W	500W	700W	750W	1KW
DC voltage	12V/24V/48V	12V/24V/48V	12V/24V/48V	12V/24V/48V	24V/48V/96V
AC output	110V/220V	110V/220V	110V/220V	110V/220V	110V/220V
Solar charge current	15A	15A	15A	15A	15A
N.W./G.W.(kg)	5.6/6.5	7.2/8.5	8.2/9.5	8.2/9.5	14/14.5
Package dimension	445*195*260mm			480*220*280mm	

FT-Series 8KW inverter



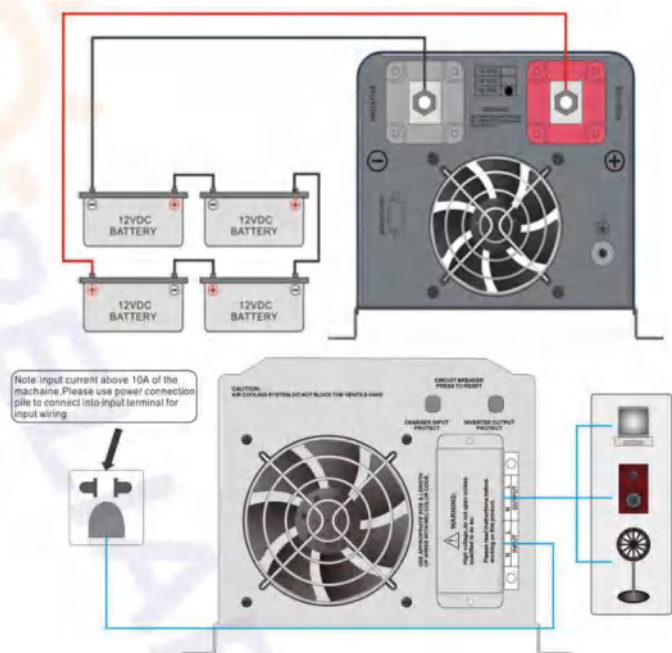
1. Double CPU intelligent control technology, excellent performance
2. The grid mode /battery mode could be set, application flexible
3. Charge current/battery type could be set, convenient and practical
4. Intelligent fan control, safe and reliable
5. Pure sine wave AC output, and be adapt to all kinds of loads
6. LCD display equipment parameter in real-time, operation status be clear at a glance
7. Output overload, short circuit protection, various of automatic protection and alarm warning

View of equipment appearance



- ①--Fan
- ②--AC input/output terminal
- ③--AC input/output fuse holder
- ④--RS232 communication interface(optional function)
- ⑤--Battery terminal negative input terminal
- ⑥--Battery terminal positive terminal
- ⑦--Earth terminal

Solar system connection



Product Specifications

Model No.	FT-8
Rated power	8KW
DC voltage	48V/96V
Output	110VAC/220VAC
Solar charge current	30A
Weight (Kg)	53
Package dimension	690*430*310mm





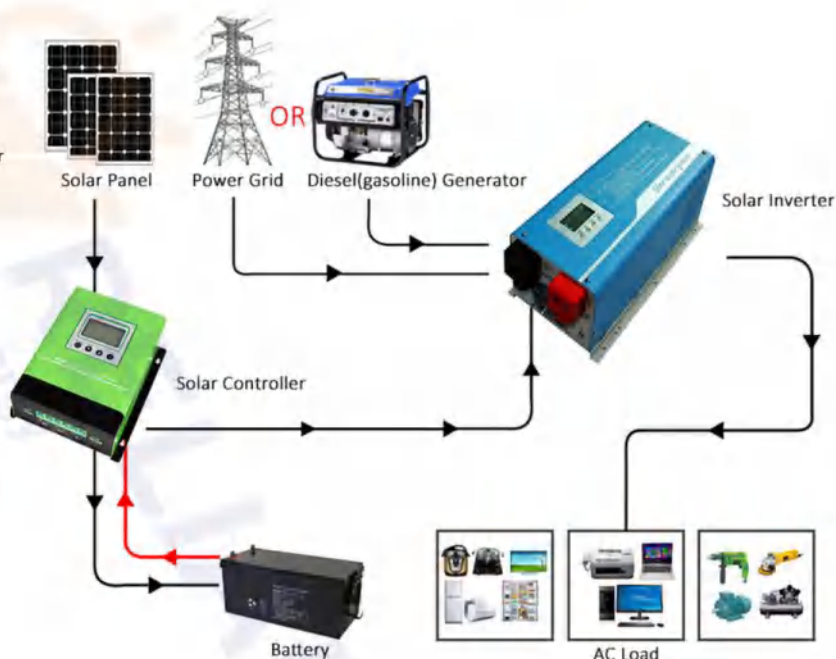
MPPT Solar charging controller

1. Mounted on a solid surface
2. The installation location must be accessible at all times
3. Install a location that can be removed at any time
4. The environment temperature should be -20°C -50°C to ensure the optimal working environment
5. Do not install the charging controller in direct sunlight to avoid power loss due to overheating

The fuselage information



Solar system connection



Product Specifications

Model No.	MP-80	MP-100	MP-120
Rated power	1.1KW	1.35KW	1.65KW
Max.PV power	4.4KW	5.4KW	6.6KW
DC voltage	12V/24V/48V	12V/24V/48V	12V/24V/48V
Solar charge current	80A	100A	120A
N.W/G.W(KG)	7.7/8.5	8/8.8	8/8.8
Package dimension	407*330*195mm	407*330*195mm	407*330*195mm





Deep Cycle Gel Battery


1. Thixotropic gel electrolyte for enhanced performance
2. Designed for deep cycle applications
3. Better recovery ability can form deep discharge
4. Power/volume ratio produces unparalleled energy density
5. Proven valve control technology ensures safe operation without maintenance
6. Robust, impact-resistant ABS housing and cover

PRODUCT SPECIFICATIONS

ITEM	HOUSING	CAPACITY(20hr)	CAPACITY(10hr)	DIMENSION(L*W*H*TH)	N.W(KG)
1	12V-250AH	275	260	520*268*220*236mm	72
2		260	240		66
3	12V-200AH	220	205	522*240*216*220mm	59
4		210	190		56
5		185	170		53
6		170	155		50
7	12V-150AH	160	150	485*170*240*240mm	41
8		150	135		38
9		130	120		36
10		115	105		33.5
11	12V-120AH	130	120	406*174*212*236mm	33.2
12		110	102		30.5
13	12V-100AH(Long)	110	102	406*174*212*236mm	30.5
14		100	90		29
15		85	80		28
16		80	70		26
17		60	52		23
18		50	45		22
19	12V-100AH(Short)	112	105	330*173*216*220mm	29
20		110	100		28
21		90	85		25.3
22		78	70		23.2
23		60	52		20
24		50	45		19
25	12V-65AH	70	65	350*179*168*172mm	19.8
26		65	60		18
27		60	55		17.2
28		45	40		16
29	12V-38AH	40	34	196*165*174*174mm	15.3
30		40	39		11.9
31		36	33		11
32	12V-250AH	30	26	165*126*175*175mm	10.2
33		28	26		7.8
34	12V-250AH	20	18		7
35	12V-100AH(EUR)	115	105	507*110*238*238mm	30
36	12V-150AH(EUR)	175	165	552*110*287*287mm	44
37	12V-200AH(EUR)	205	190	546*124*325*325mm	53




RELIABLE SOLAR ENERGY TECHNOLOGY CO., LTD

 B2805 Tianxiu, 300# Huanshi Zhong Road, Yuexiu District, GZ, Guangdong province, China

 +86 13539831369 Jennifer

 Solar@reliablesolarenergytech.com

 www.reliablesolarenergytech.com

